

Healthy Futures Consultation 2011



Local Services for Heart and Stroke Patients



What we're here to discuss

- Heart & Stroke Consultation
- Programme by Healthy Futures
- North East Manchester based
- Covering: Bury, Oldham, North Manchester, Rochdale and parts of Rossendale

What's Involved

- Proposed changes to heart and stroke services
- Need to understand how this may affect you and your family
- Hospitals involved:
 - Rochdale Infirmary
 - Fairfield General
 - Royal Oldham
 - North Manchester

How you can have your say

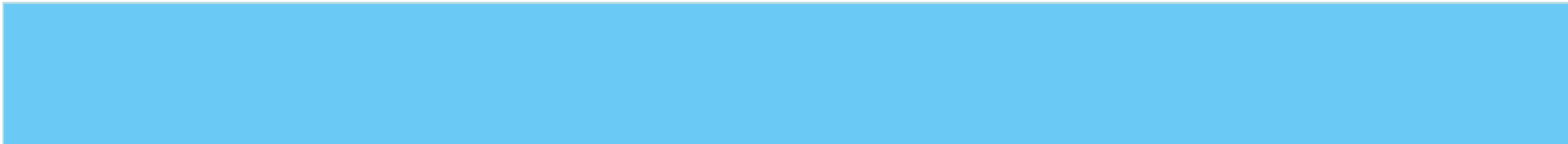
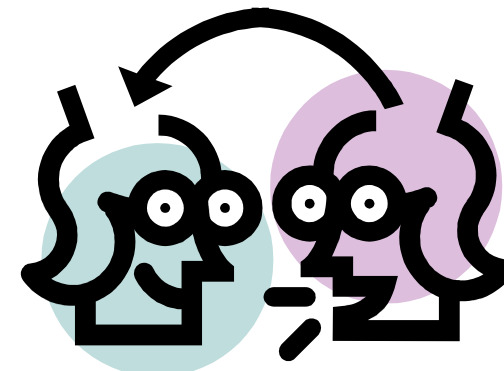
§ Get involved now

§ Complete a questionnaire

§ Email

§ Call

§ Visit the website



What will happen to the Insight?

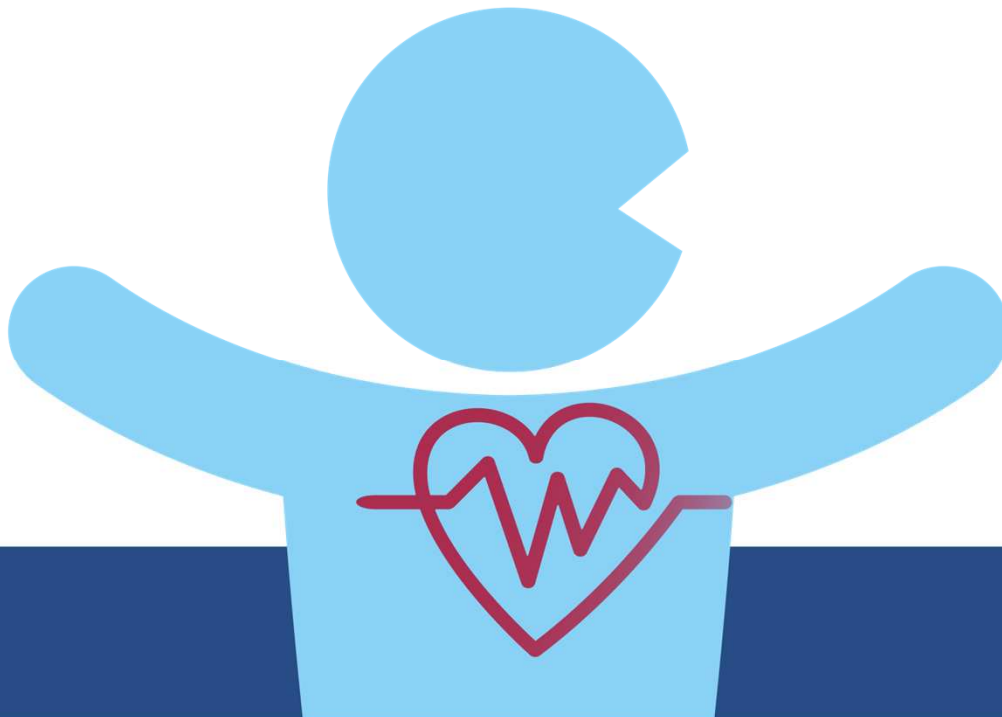
§ Consultation ends 14th January 2012

§ All views will be collated and analyse

§ Full consultation report with recommendations

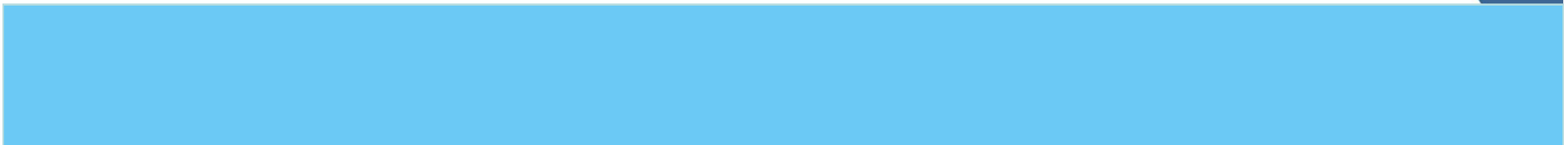
Healthy Futures Consultation 2011

PLANNED CARDIOLOGY



Original Healthy Futures Consultation - Planned Cardiology

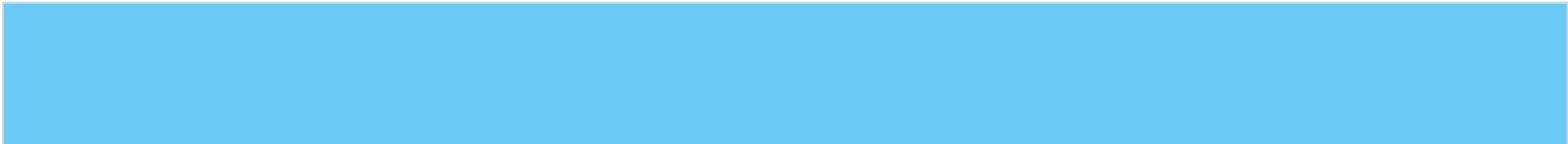
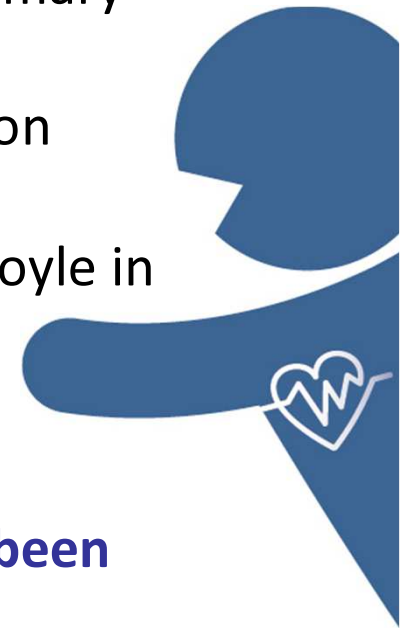
Recommended that the Rochdale Silver Heart Unit become a 'centre of excellence' for planned cardiology services



However, as a result of.....

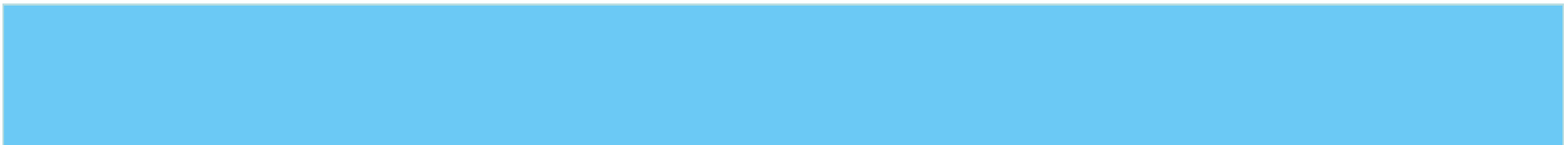
- changes in clinical practice since the original HF consultation
- the movement of acute services from the Rochdale Infirmary site
- the need to maintain Silver Heart Unit BCIS* accreditation
- recommendations made by local consultants and GPs
- an independent review conducted by Professor Roger Boyle in March 2011

....new proposals for the delivery of these services have been developed



Proposals for Planned Cardiology

- Improve local provision for the prevention and early detection of heart disease
- Relocate complicated and high risk planned procedures from RI to FGH where access to anaesthetics and critical care is available.
- Maintain outpatient services on all sites
- Improve the early diagnosis of heart disease via the development of less invasive diagnostic techniques
- Continue to develop cardiac rehabilitation services



The Healthy Futures team and your local engagement teams have already been talking to a range of local groups who represent those most likely to be affected by these proposals. They told us about key areas that were significant to them.

For cardiology these areas were:

- *Transport and access between the hospital sites*
- *The importance of providing and developing specialist services*
- *The need to improve communication so that patients know when and where and how they will be treated.*



Now...What do you think?



**YOUR
VIEWS
MATTER**

1. What should be done to improve transport and access to hospital services?
2. How do you feel about moving some heart services to give better specialist care?
3. What do you feel needs to be taken into account with the changes?
4. How can we improve communication so that patients feel more informed about how, when and where they will be treated?

Healthy Futures Consultation 2011

STROKE REHABILITATION



Original Healthy Futures Consultation – Stroke rehabilitation

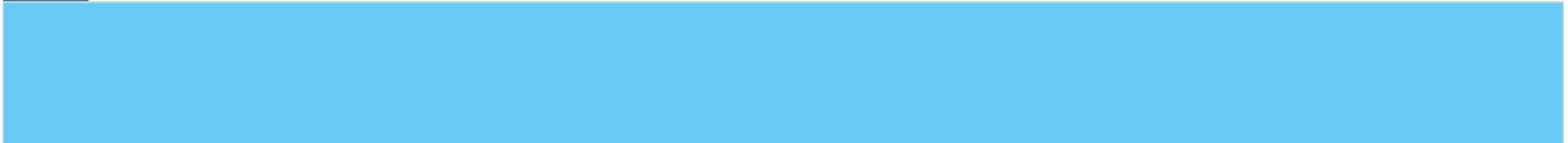
Recommended that Rochdale stroke patients, who were treated elsewhere immediately after their stroke, would be transferred back to Rochdale Infirmary for their rehabilitation, once they had been medically stable for 48 hours



However, as a result of.....

- changes in clinical practice since the original HF consultation
- the risk of patients who've had a stroke developing further medical complications
- the movement of acute services from the Rochdale Infirmary site
- recommendations made by local consultants and GPs

....new proposals for the delivery of these services have been developed



Proposals for Stroke Rehabilitation

Option A

Stroke rehabilitation will be delivered in a specialist stroke unit that deals with the medical treatment needed immediately after a stroke. For the majority of Rochdale residents, this will be at Fairfield General Hospital. For those patients that are ready to go home, they will receive rehabilitation care from a community (local) team.

Option B

This is exactly the same as option A, but with the addition of a 'step-down' facility in the borough for Rochdale patients. This offers care for a short period in a residential environment and would mean potentially cutting services elsewhere.



The Healthy Futures team have already been talking to a range of local groups who represent those most likely to be affected by these proposals. They told us about key areas that were significant to them.

For stroke rehabilitation these areas were:

- *The need to provide ongoing support and care once a patient is discharged from hospital.*
- *Transport and access between the hospital sites.*
- *The importance of receiving care from professionals who are specially trained in providing stroke services.*



Now...What do you think?



**YOUR
VIEWS
MATTER**

1. Which Option do you prefer and why?
2. If we can get appropriate transport systems in place how do you feel about travelling to receive specialist stroke services?
3. Option B would require significant funding. How do you feel about that in the current economic climate?

Questions?



You can get involved by visiting:

www.healthyfutures.nhs.uk

or for further information call

0800 121 4406